

EQUIP. TYPE R390A/HRR EXP. NO.

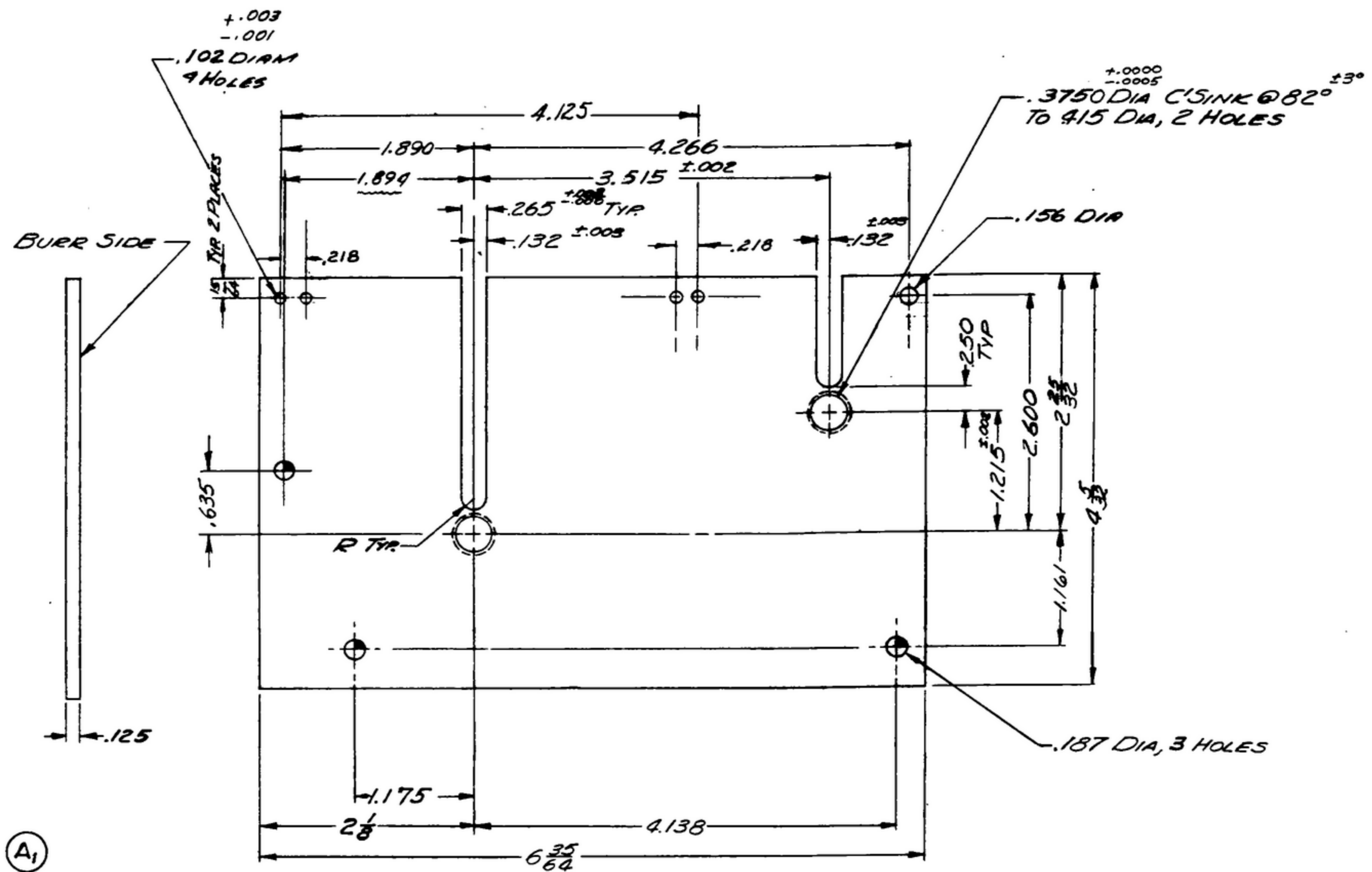
Col. 540 7540 003

NOTICE: WHEN GOVERNMENT DRAWINGS, SPECIFICATIONS, OR OTHER DATA ARE USED FOR ANY PURPOSE OTHER THAN IN CONNECTION WITH A DEFINITELY RELATED GOVERNMENT PROCUREMENT OPERATION, THE UNITED STATES GOVERNMENT THEREBY ASSUMES NO RESPONSIBILITY FOR ANY OMISSION, WHATEVER, AND THE FACT THAT THE GOVERNMENT HAS PROVIDED THESE DRAWINGS, SPECIFICATIONS, OR OTHER DATA IN NO WAY SHALL BE CONSIDERED AS AN ENDORSEMENT OR RECOMMENDATION OF ANY PRODUCT OR COMPANY, OR AS A WARRANTY OF MERCHANTABILITY, OR AS A GUARANTEE OF FITNESS FOR ANY PARTICULAR PURPOSE, OR AS A GUARANTEE OF THE ACCURACY OF ANY INFORMATION CONTAINED HEREIN.

THIS DOCUMENT HAS BEEN PURCHASED BY THE GOVERNMENT AND MAY BE REPRODUCED AND USED IN CONNECTION WITH ANY GOVERNMENT PROCUREMENT OR MAINTENANCE OPERATION.

* FOR INFORMATION ONLY. CONTRACTOR MAY AT HIS OPTION DEVIATE FROM THESE PROCESS DETAILS.

*SWE APPROVAL		REVISIONS			
SYM	PR	SYM	DESCRIPTION	DATE	APPROVAL
	PR10042-4	A ₁	A ₁ - RENUMBERED NOTES	8 OCT. 59	42428-PC-59-A1-59 REV'D. PME
B ₁	CA 84688	B ₁	B ₁ - WAS TEMP T4 & 2024 WAS 24S	23 FEB. 60	42428-PC- REV'D. PME



- NOTES: (A₁)
 (B₁) 1. ALUMINUM ALLOY 2024 TEMP T3, PER SPEC QQ-A-355
 2. FINISH: E513 PER SPEC MIL-F-14072
 * COLLINS 580 0036 00.
 3. - ALL SLOTS ARE TO HAVE $\sqrt{3}$ SURFACE FINISH AND FREE OF BURRS.
 4. - PLATE SHALL BE FLAT WITHIN .020 TOTAL INDICATOR READING.

COLLINS PART NO.	ITEM	QTY	RECD	DATE	DESCRIPTION	MADE	DATE
LIST OF MATERIAL							
COLLINS PART NO. 558 0328 003							

DRAWN R.R.R.				CHECKED [Signature]		APPROVED		COLLINS-RADIO-CO. 1A21A-PH-51-93		PLATE - REAR DEPARTMENT OF THE ARMY SIGNAL CORPS ENGINEERING LABORATORIES FORT MONMOUTH NEW JERSEY SM-C-248979	
UNLESS OTHERWISE SPECIFIED: DECIMAL DIMENSIONS INCLUDING HOLE SIZES MAY VARY ±.005 FRACTIONAL DIMENSIONS INCLUDING HOLE SIZES MAY VARY ±1/64 MACHINED ANGLES MAY VARY ±.1° SHEARED ANGLES MAY VARY ±.25° BROKEN ANGLES MAY VARY ±.1° ECCENTRICITY BETWEEN ANY DIAMETERS ON THE SAME CENTERLINE SHALL NOT EXCEED .010 TOTAL INDICATOR READING. ALL DIMENSIONS ARE FINISH DIMENSIONS INCLUDING APPLIED FINISH AND ARE GIVEN IN INCHES.											
558-0326-003				1		SM-C-248979		SG-DL248775			
COLLINS NO.	QTY	NEXT ASSY	USED ON	APPLICATION		DATE 28 DEC '55		SCALE 1/1			

WHEN REFERRING TO THIS DRAWING STATE DRAWING NO., APPLICABLE ISSUE SYMBOL, IF ANY, AND DATE